

Do you want this on your doorstep?



HS2 Ltd have published new details about how HS2 will affect our area and are asking for your objections. This may be our **LAST CHANCE** to have our say on the chaos and destruction they intend to impose on LS25 & LS26.

Inside you can read more about the effect HS2 will have on you as you try to go about your normal day and things such as road closures, depressed house prices and sales, negative equity, increased congestion, diversions, loss of existing train services, noise and our compromised standard of living.

On the back page are the things you must do to fight against the proposed scheme. Everyone must act now before it's too late. The two consultations close on 21st December 2018.

The scale of construction now revealed by HS2 Ltd in our area is far worse than ever imagined. The maps inside show the extent of the land that HS2 Ltd now envisage will be required during construction – way more than previously indicated.

It is devastating to learn that the construction of the line will have an even greater impact than previously thought, despite all previous assurances by HS2 Ltd they would minimise the disruption, destruction, and visual intrusion of the train lines.

TAKE ACTION NOW...



These are the views we can expect during the construction that will take place from 2024 to 2033.

The viaduct across our valley will be the longest in England and will look much like the one shown here.

The heart of our green valley will be ripped out and changed irrevocably!



Images: www.ealing-against-hs2.co.uk

LIVING WITH HS2

Since HS2 was announced in January 2012 our area has been blighted; many house prices tumbled and the property market dramatically slowed leaving many home owners unable to move, sell or remortgage.

Proposed one-off compensation payments are woefully inadequate, with only a tiny minority of homeowners in our community being eligible to receive them.

Main line viaduct – a blot on the landscape

Our skyline and countryside will be dominated forever by a huge concrete viaduct towering 36m (120 feet) over Woodlesford, the longest in England at 2.2km (1.4 mile).

At its highest point, with trains travelling at 225 mph, the viaduct will stand 4 houses high over the River Aire. HS2 will be seen and heard from almost everywhere and every home as it spans the entire Aire Valley.

Branch (spur) line tunnels – an eyesore

Two 1.9km tunnels will pass under Woodlesford. Their construction destroys Water Haigh Woodland Park and permanently closes Eshald Lane at its southern end.

Huge areas of greenbelt land will be lost to HS2 all the way from the River Aire through to the M62. Both viaducts will tower over Methley Lane, and the two spur tracks will cut through Fleet Lane to enter the tunnels.

Operational nuisance – disturbed tranquillity

With 18 passenger trains per hour, that's roughly one every 3 minutes, services will run 5am to midnight Monday to Saturday and 8am to midnight on Sundays. Freight services may also be introduced in the future.

Trains will operate 24 hours a day. Empty HS2 trains will move to and from the Stourton depot for cleaning and servicing overnight. Some classic diesel trains will be used for overnight maintenance of track and equipment.

Community green spaces and wildlife lost

Our area will be severely affected, forever. Water Haigh Woodland Park (WHWP) will be destroyed, fishing lakes lost, country and canal-side footpaths closed or diverted, nature areas gone forever – The Aire Valley decimated.

An abundance of wildlife, wildflowers, insects, bats, birds, deer, white-clawed crayfish, otters, water vole and great crested newts will all be significantly affected. Bats and barn owls are at risk of being killed by passing trains.

Newly planted trees will take 20 years or more to replace those being cut down and will never be tall enough to hide the viaduct. WHWP is the result of 40 years work.

Travel to London – more costly and slower

The loss of some existing rail services, for example LNER from Wakefield to London on the East Coast Main Line, once HS2 is operational will result in increased costs and time to travel to Leeds, negating any benefit of HS2.

10 YEAR SENTENCE

The worst is yet to come...

With a decade of testing and construction, everywhere from Leeds to Wakefield and beyond, through Rothwell, Oulton, Woodlesford, Swillington and Garforth will be unbearable with massive disruption to everyone's lives.

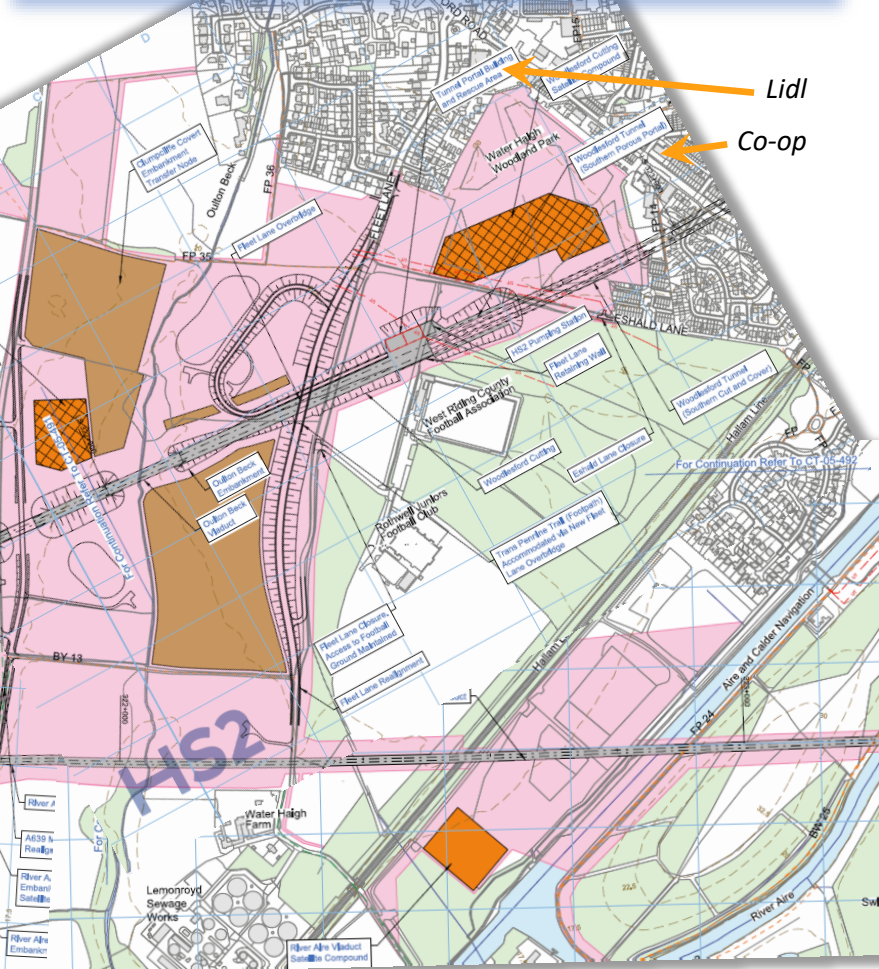
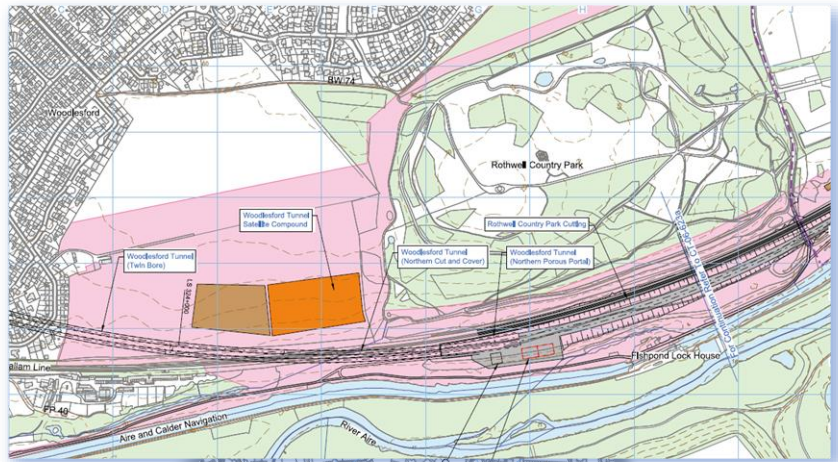
Noise, vibration, floodlighting, pollution, smells, dust, dirt and construction traffic will all contribute to a poor quality of life; disturbed sleep, gridlocked roads, lost time and earnings, higher costs and falling house prices.

For LA15, HS2 Ltd's name for our area (Warmfield and Altofts to Woodlesford and Swillington), they state:

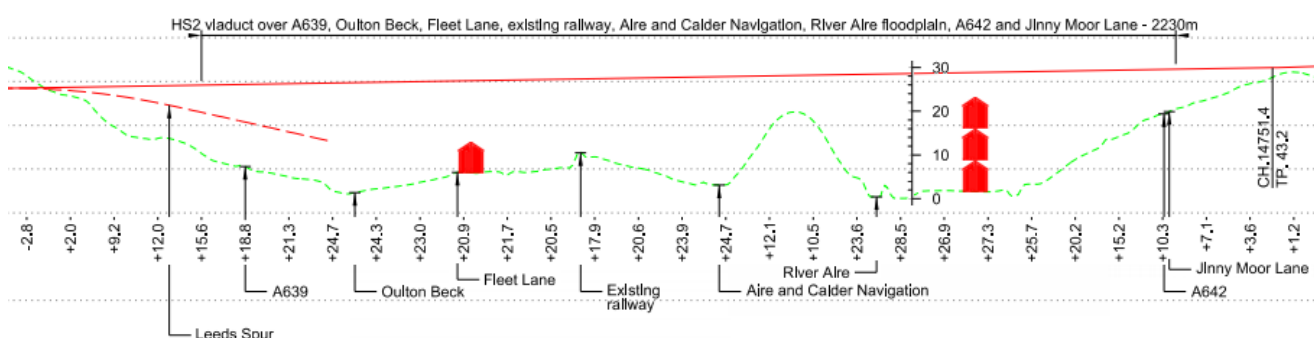
- ✖ 14km of main line and 4km of spur will be built
- ✖ Major construction activities take place 2024 - 2032
- ✖ Construction work in the heart of Woodlesford takes place 24 hours a day 7 days a week
- ✖ Many road closures and much traffic congestion can be anticipated, including; M1, M62, M621, A61 Leeds Rd, A639 Methley Ln, A642 Wakefield Rd / Aberford Rd, B6135 Newmarket Ln, Fleet Ln, Eshald Ln, Bullerthorpe Ln, Swillington Ln, B6481 Pontefract Rd, A63 Pontefract Ln
- ✖ Most bus services will be disrupted, including; 9/A, 12, 13/A, 19/A, 22, 47, 48/A, 61, 74/A, 86/A, 125, 146, 147, 149, 153, 157, 163, 166, 167, 168, 173A, 174/A, 175/A, 183, 187, 188, 189, 402, 403, 410, X60
- ✖ The Hallam train line (and Woodlesford station) will be closed on a number of occasions during a 7 year period, but they don't say for how long!
- ✖ 47 demolitions (approx.) anticipated; 31 residential, 14 commercial, 1 community, 1 industrial
- ✖ 457ha (457 football / rugby pitches) of agricultural land required for construction impacting 38 farms
- ✖ HS2 is likely to affect residents' health due to a range of environmental and social factors impacted
- ✖ HS2 will affect residents' quality of life through a combination of construction noise, visual and traffic impacts that change the neighbourhoods' character
- ✖ 122 properties (approx.) will need noise insulation
- ✖ Accessibility of key services (including shops) may be reduced due to road closures and congestion
- ✖ The influx of workers will see a change in the local population size and demographics of communities
- ✖ Once operational, HS2 will change the character of surrounding neighbourhoods and reduce the quality of life for residents due to the noise of passing trains and presence of rail infrastructure
- ✖ HS2 will be visible from almost everywhere during construction and once operational; the impact on character and appearance of the local landscape will be significant despite 15 years of landscaping

We estimate over 15,000 trucks will be required just to remove tunnel spoil, with many more needed to supply materials. People will lose jobs. Businesses will close.

The map shows a residential area with several streets: Bulkeley Lane, Jinn Moor Lane, Millersmore Lane, and Millersmore Lane. Key features include a 'Greenhouse and Cottage' on Millersmore Lane, a 'Proposed Development' area in orange, and several 'For Confirmation' notes. A large blue '75' is visible in the top right corner.



The brown zones above are material (and spoil) stockpiles, orange areas are construction compounds and the hatched orange zones are system compounds (containing equipment, offices, electrical substations, manufacturing, pumping and ventilation equipment, etc). On the profile below the red lines represent the tracks and the green line the ground. The numbers across the bottom indicate height of the track above ground in meters, gantries will be 8 to 10m higher.



STOPPING HS2

HS2 should be abandoned, it can't be justified. Despite growing opposition, the Government (with three party support) is, however, still determined to press ahead.

We continue to fight HS2 on multiple levels; together we are making a difference. Our joint objectives are to:

STOP HS2 entirely – force Government to adopt a better and more sustainable solution

INFLUENCE route choice – minimise environmental impact, irrespective of Leeds City Council's aspirations

MITIGATE impact – minimise destruction, disruption and intrusion both during construction and long term

COMPENSATE everyone – secure both full and fair compensation for all those affected by HS2

We must collectively fight on all fronts at the same time to ensure we secure the best possible outcome for our future. If we can't stop it, or move it, they should tunnel it all (like Manchester) or fully compensate everyone.

The proposed route is totally unacceptable. We must all work together to **demand that the whole route through our area be reconsidered** without any regard to Leeds City Council's aspirations to develop the South Bank.

What you must do NOW

If nothing else, respond to the current consultations before 21 December 2018 and write to your MP. Ensure your friends and neighbours do the same. SOWHAT will publish guidance in December to help you do this.

Why is it so important?

This is likely to be your **LAST** opportunity to have your say about the proposed route and its impact. We can change our future if we stand together and fight it **NOW**.

Make time to help – there really is **strength in numbers**.

HS2 Ltd, our MP, Councillors, Leeds City Council leaders and executive, Transport Secretary, and Prime Minister all need to realise we won't rest until we get what's right.

What else can I do?

Take time to better understand what HS2 will mean for our communities and raise objections to the many other relevant parties by letter, email, printed form, or online form to ensure our voice is heard. See list on the right.

Where can I get more information?

Visit the SOWHAT website and join our Facebook group. Attend the HS2 Public information event and obtain copies of their proposals and consultation material.

How can I get in touch?

If you're not online, you can reach SOWHAT by leaving a message on 07805 038219 or find us at The Midland Hotel from 11-11:30am on the first Saturday of most months. We can generally be found near the side door.

TAKE ACTION NOW!

Here are the things you can and must do to stand up for our towns, villages and communities – help change our fate and your future. Tell friends and neighbours too:

- Attend the HS2 Public Information event[#] at Oulton Institute 2pm - 8pm **Wednesday 21 November 2018**
- Download or order printed copies^{*} of HS2 material so you can understand the full impact of their plans
- Understand why the White Rose route was rejected by Leeds City Council, even though far less damaging
- Respond to both HS2 consultations by **21 December**, SOWHAT guidance will be available online soon
- Write to your MP and local Councillors demanding they take action to oppose the route and proposals
- Write to Leeds City Council (Judith Blake, Richard Lewis and Tom Riordan) to demand their support
- Write to the Department for Transport, Transport Secretary and Prime Minister demanding action
- Sign SOWHAT and national e-petitions via website and sign up to our newsletter and mailing list
- Consider making a donation via the website to help cover the cost of printing leaflets, such as this one
- Tell family and friends everywhere, and for those near the route explain the disruption that is coming
- Join the "SO WHAT" Facebook group to get the latest breaking news as it becomes available
- Check www.sowhat.org regularly for news, updates, guidance, template responses and calls to action

[#] Alternative events at Leeds (23/11) and Garforth (19/11)

^{*} Order printed copies of all 14 consultation documents for your area from HS2 Ltd. Phone on 08081 434 434 or email HS2enquiries@hs2.org.uk – Woodlesford is LA15, see SOWHAT website for other areas and downloads.



www.sowhat.org.uk

Take every opportunity to make our voice heard. All those impacting our future need to be held accountable for their actions. Don't let them get away with it...

SOWHAT
SWILLINGTON OULTON WOODLESFORD **HS2** ACTION TOGETHER